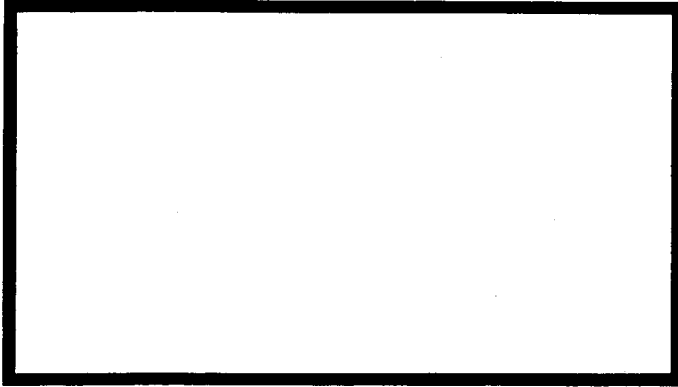


LOOKING AT SEEDS

Name: _____

PART I - Draw A Seed

1. **Procedure:** Carefully peel off the seed coat with your fingers and split the seed in half. Observe with a magnifying glass.
2. Draw the inside of a seed. Label the seed leaves, seed coat and embryo.



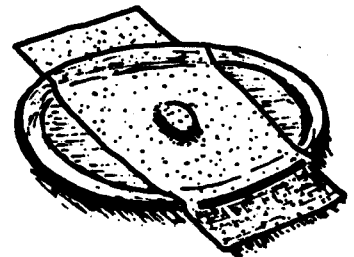
3. What is the purpose of each part?

- a) seed leaves _____
- b) seed coat _____
- c) embryo _____

PART II - Bean Sprouts

1. **Procedure:** Place a bean seed between wet paper towels on a plate. Keep towels moist.
2. Date started _____

Day	Observation

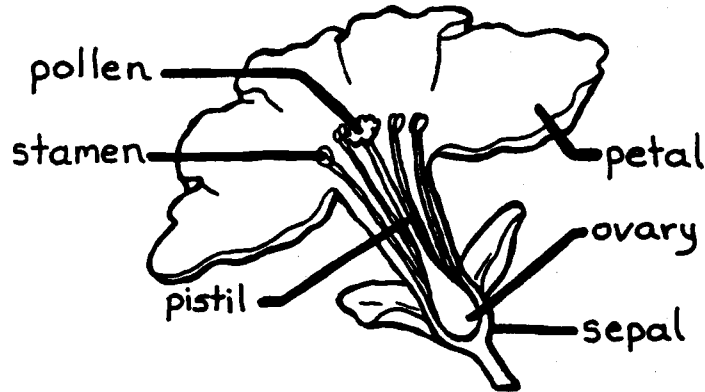


3. List two things seeds need to sprout? _____

FLOWER POWER

Name: _____

1. This is a diagram of a petunia and its parts.



2. Dissect a flower. Pluck off the petals first.

- How do the petals feel? _____
- What color are the petals? _____
- Are they the same color all over? _____
- Name the yellow substance at the end of the stamen. _____
- Find the pistil. Cut open the pistil's ovary to see the tiny eggs.
- If the eggs join with a grain of pollen, what will they become? _____
- Why is the tip of the pistil often sticky?

3. Pollination (Fill in the blanks below)

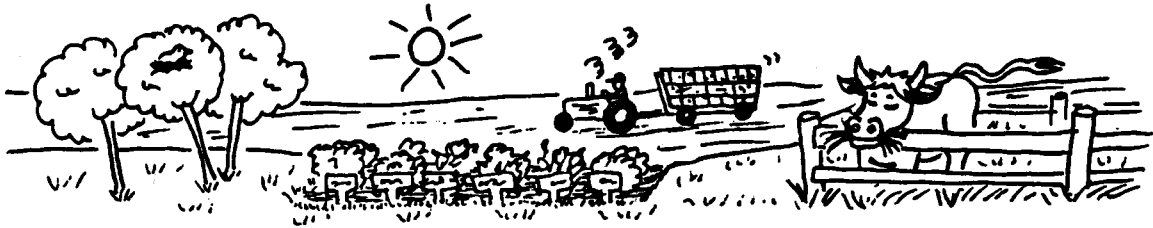
Pollen forms at the end of the _____. Pollen is _____ and powdery. Pollination happens when the _____ from the stamen of one flower reaches the _____ of another flower. The pollen travels from one flower to another by _____ or on the bodies of _____. Insects are attracted to flowers by their _____ and _____. While bees gather _____ from a flower (to make honey) they pick up _____ on their bodies and legs. They carry this pollen to other _____. After flowers have been pollinated they lose their _____. The ovary swells and develops into a _____. Which contains the seeds inside.

4. Why are insects important to farmers and fruit growers?

Plants

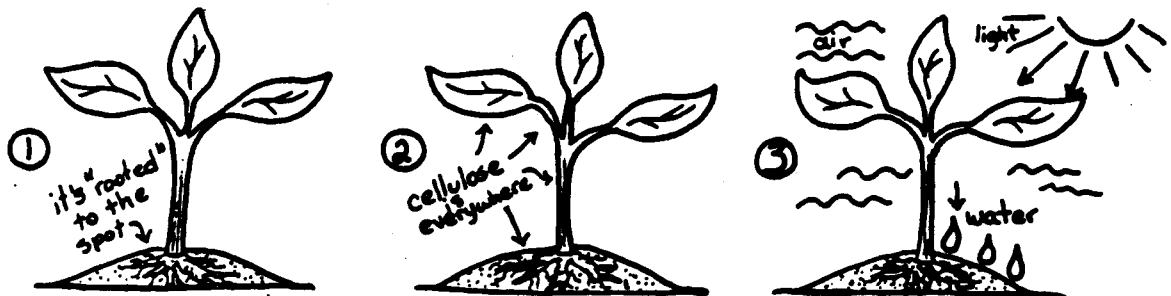
What Are Plants?

Plants are living things that grow almost everywhere on the planet. They are very important because they make the oxygen in the air that people breath as well as the food we eat. Without plants, life on earth would not exist!



Factfile: There are over 250,000 different types of plants on the earth.

Plants have certain characteristics that make them different from other living things like animals.



- 1) Plants stay in one place for their entire life. (most animals move around to find food)
- 2) Plants are made up mainly of a substance called cellulose. (animals do not have cellulose)
- 3) Plants are able to make their own food using sunlight, water and air in a process called photosynthesis. (animals are unable to make their own food and must eat plants or animals that have eaten plants to survive)